

SMRWC

ST. MARY'S RIVER WALLEYE CUP

These maps are only representative of tournament boundaries. Lines are not drawn to scale or with precision. Specific descriptions are listed below and in tournament rules. FOLLOW SPECIFICS AS LISTED:

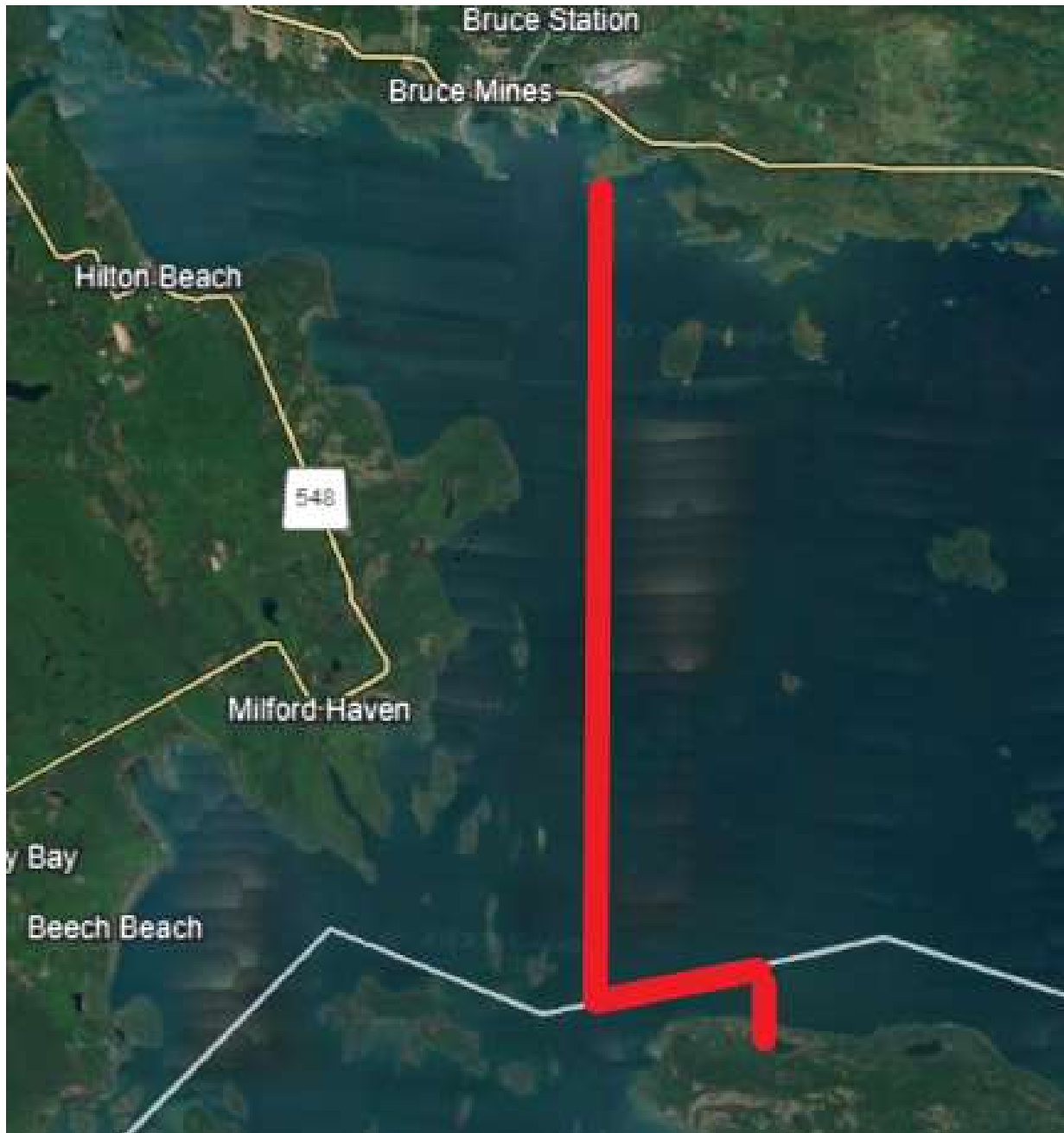
North Boundary: Echo Bay Bridge



SMRWC

ST. MARY'S RIVER WALLEYE CUP

East Boundary: Longitude line 83°45W south to the International Boundary with the United States



SMRWC

ST. MARY'S RIVER WALLEYE CUP

West Boundary: International Bridge/Compensating Gates (no locking up)

